

*With Love,
Always*

2025 VALENTINE'S DAY
GIFT GUIDE

Sweetly Yours

Revealing itself through tender whispers and shared glances, love shapes life's sweetest connections with an irreplaceable, lingering spark. Each moment transforms into a precious memory and invites us to celebrate the many expressions of affection.

Let each piece — from trending designs to classic heart motifs that never go out of style — tell a story in a world where love takes center stage.



- A. **88139** Natural Diamond Petite Double Interlocking Heart Necklace, $\frac{1}{8}$ ctw, 1mm, 14K Yellow, 16–18", 33, \$1,489 | B. **651759*** Natural Diamond Heart Necklace, $\frac{1}{4}$ ctw, 14K White, 18", 638, \$1,529 | C. **88593** Engravable Heart Toggle Necklace, 15.6x12mm, 14K Yellow, 18", \$1,465 | D. **689361** Natural Mozambique Garnet Heart Drop Earrings, 31.7x7mm, 14K Yellow, 57, \$1,485 | E. **689328*** Lab-Grown Diamond Dangle Earrings, $2\frac{3}{4}$ ctw, 29.5x4.35mm, 14K White, 618, \$4,245 Lab-Grown
- F. **689361** Natural Pink Tourmaline Heart Drop Earrings, 31.7x7mm, 14K Yellow, 83, \$3,155 | G. **126954** Natural Diamond Contour Band, 1 ctw (5.5x5.5mm), 14K Yellow, 32, \$4,689 3C Design | H. **126350** Natural Diamond Eternity Band, $\frac{3}{8}$ ctw, 1.3mm, 14K Yellow, size 7, 32, \$2,045 | J. **EL7** Comfort-Fit Lightweight European-Style Band, 5mm, 14K Yellow, size 7, \$1,025

Candid Affections



Modern heart designs and timeless details inspire a ring stack that reflects anyone's personal style.



- A. **689352** Natural Diamond Heart Ring, $\frac{1}{3}$ ctw, 20.65x20.35mm, 14K Yellow, 33, \$1,669
- B. **689351** Natural Diamond Engravable Signet Ring, $\frac{1}{10}$ ctw, 21.45x20mm, 14K Yellow, 33, \$1,135 | C. **72427** Natural Mozambique Garnet Ring, 4x4mm, 14K Yellow, 57, \$1,489
- D. **689237** Lab-Grown Diamond Ring, $\frac{1}{6}$ ctw, 1.5mm, 14K Yellow, 618, \$955 Lab-Grown | E. **72414** 3-Stone Family Pierced Heart Ring Mounting, 1.5mm, 14K Yellow, \$1,165 | F. **72427** Lab-Grown Diamond Ring, $1\frac{1}{8}$ ctw, 4x4mm, 14K Yellow, 618, \$2,599 Lab-Grown
- G. **689237** Natural Pink Tourmaline Ring, 1.5mm, 14K Yellow, 83, \$945 | H. **126910** Natural Diamond Heart Ring, $\frac{1}{6}$ ctw, 3x3mm, 14K Yellow, 33, \$1,199 | J. **72427** Natural Pink Tourmaline Ring, 4x4mm, 14K Yellow, 83, \$2,005



Ties That Bind



Mix, match, and layer complementary bracelet styles for a stack that grows with your story.

A. **72445** Natural Diamond Ring, 1/5 ctw, 10.2x3.1mm, 14K Yellow, 33, \$1,925 | B. **BRC999** Beaded Elastic Bracelet, 3mm, 14K Yellow Gold-Filled, 6 1/2", \$85 | C. **BRC999** Beaded Elastic Bracelet, 6mm, 14K Yellow Gold-Filled, 6 1/2", \$205 | D. **CH1259** Heart Chain with Lobster Clasp, 9mm, 14K Yellow Gold-Filled, 7", \$179 | E. **BRC973** Engravable Oval Bracelet, 11x5mm, 14K Yellow, 7", \$529 | F. **BRC1001** Lab-Grown Diamond Flexible Bangle Bracelet, 1 ctw, 1.7mm, 14K Yellow, 7", \$2,745 [Lab-Grown](#) | G. **BRC962** Heart and Paperclip-Style Chain Bracelet with Lobster Clasp, 14x11mm, 7", \$775 | H. **689147** Freshwater Cultured Pearl Bracelet with Heart Dangle and Lobster Clasp, 14K Yellow, 7-8", 39, \$615 | J. **BRC976** Natural Diamond Heart and Paperclip-Style Bracelet with Spring Ring, 1/3 ctw, 7", 33, \$1,839 | K. **BRC944** Paperclip-Style Chain Heart Toggle Bracelet, 14K Yellow, 6", \$595



Modern Delight

Design effortlessly elevated looks with darling details and brilliant accents — including lab-grown diamond options.

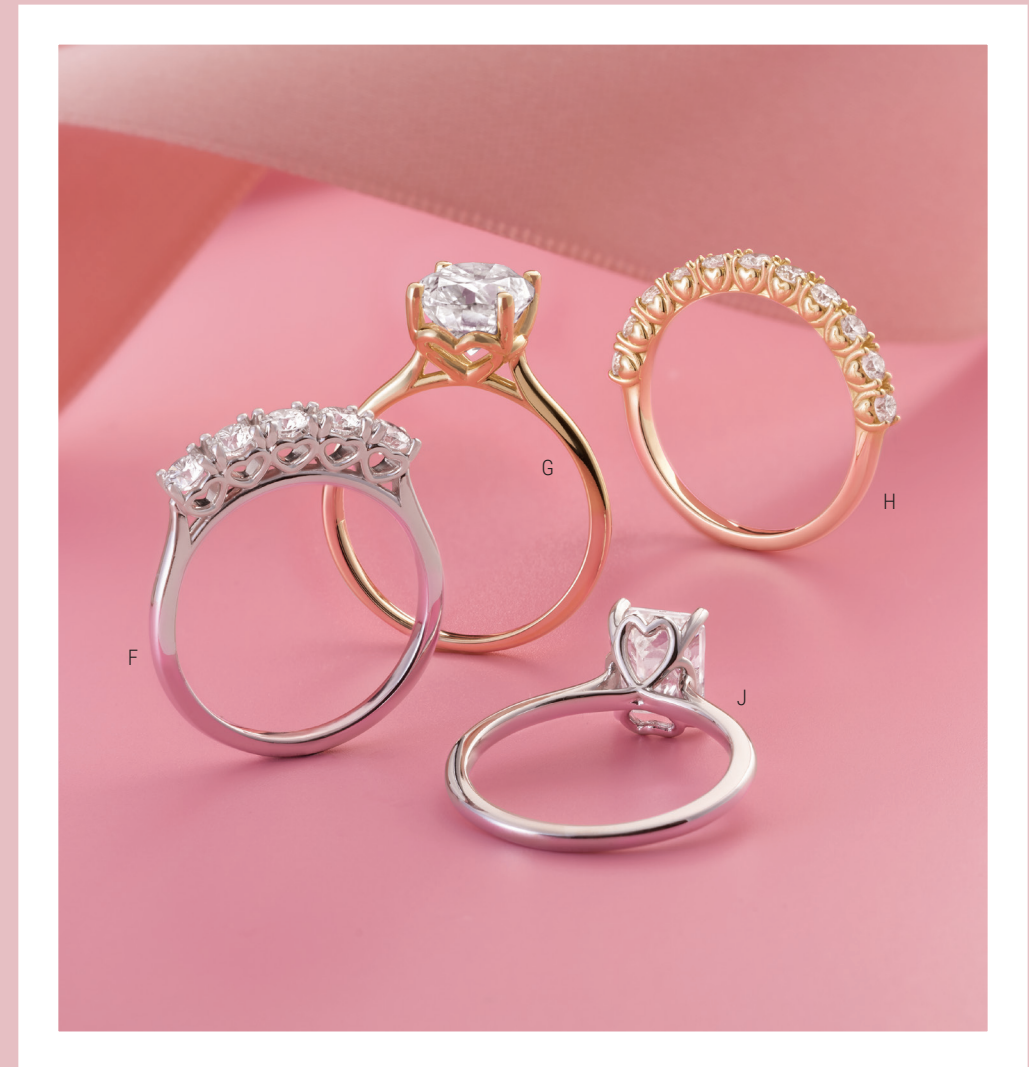


A. **CH1246** Twisted Herringbone Chain with Spring Ring, 1.6mm, 18", 14K Yellow, \$679 | B. **CH1213** Rolo Chain with Spring Ring, 1.1mm, 20", 14K Yellow, \$509 | C. **2002926** Lab-Grown Diamond Slide Bail, 1/5 ctw, 14K Yellow, 618, \$475 **Lab-Grown** | D. **29732** 4-Prong Emerald Dangle, 7x5mm, 14K Yellow, \$85 | E. **2002963** Cluster Earring Top, 2x1mm, 1.75x1.75mm, 14K Yellow, \$85 | F. **2000900** 4-Prong Square Dangle, 3x3mm, 14K Yellow, \$65 | G. **CH1213** Rolo Chain, 1.1mm, 14K Yellow, \$19 per inch | H. **2002575** 4-Prong Straight Baguette Link, 4x2mm, 14K Yellow, \$55 | J. **JR13** Round Jump Ring, 1.3mm ID, 14K Yellow, \$9 | K. **689326** Lab-Grown Diamond Line Necklace, 10 ctw, 4.7x3.1mm, 16", 14K Yellow, 618, \$12,829 **Lab-Grown** | L. **87151** 5-Stone Family Station Necklace Mounting with Spring Ring, 3mm, 16", 14K Yellow, \$985 | M. **CH616** Diamond-Cut Singapore Chain with Spring Ring, .50mm, 18", 14K Yellow, \$265 | N. **R50077** Lab-Grown Diamond Cross Pendant, 1/4 ctw, 2.2mm, 14K Yellow, 618, \$639 **Lab-Grown**



Love Takes Shape

Heart-shaped center stones, accents, and romantic details add a contemporary flair to timeless love.



- A. **124131** Lab-Grown Diamond Semi-Set Engagement Ring, 2 ct (8x8mm), 1/2 ctw, 14K Yellow, 618, \$1,875 | B. **123213** Solitaire Engagement Ring Mounting, 4 ct (10x10mm), 14K Yellow, \$1,205 | C. **126398** Lab-Grown Diamond Anniversary Band, 2 1/2 ctw (5x5mm), 14K Yellow, 618, \$4,185 | D. **126915** Lab-Grown Diamond Anniversary Band, 3/10 ctw (3x3mm), 14K Yellow, 618, \$2,069 | E. **123699*** Lab-Grown Diamond Semi-Set Engagement Ring, 3 ct (9x9mm), 1/2 ctw, 14K White, 618, \$1,905 | F. **126411*** Natural Diamond Anniversary Band, 3/4 ctw (3.5mm), 14K White, 32, \$3,179 | G. **123060** Solitaire Engagement Ring Mounting, 2 1/6 ct (10x8mm), 14K Yellow, \$729 | H. **126663** Natural Diamond Anniversary Band, 5/8 ctw (2.5mm), 14K Yellow, 32, \$2,475 | J. **123060*** Solitaire Engagement Ring Mounting, 1 3/4 ct (8x6mm), 14K White, \$679

A Refined Glow

Brighten their collection with bold yellow gold styles that make a statement and offer a polished look.



A. **689332** Anchor Chain Hoop Earrings, 22x15.3mm, 14K Yellow, \$1,425 | B. **688853** Lab-Grown Diamond Line Necklace, 57/8 ctw, 2mm, 16", 14K Yellow, 618, \$8,135 **Lab-Grown** | C. **CH1271** Boa Snake Chain with Lobster Clasp, 1.2mm, 18", 14K Yellow, \$1,605 | D. **126996** Natural Diamond Negative Space Ring, 1/3 ctw, 5x2.5mm, 14K Yellow, 124, \$2,659 | E. **BRC1001** Lab-Grown Diamond Flexible Bangle Bracelet, 1 ctw, 1.7mm, 14K Yellow, 7", \$2,745 **Lab-Grown** | F. **BRC989** Hinged Twisted Bangle Bracelet, 4mm, 7", 14K Yellow, \$3,147 | G. **689254** Hinged Hoop Earrings, 20mm, 14K Yellow, \$1,365 | H. **88768** Pear Solitaire Heart Pendant, 10x7mm, 14K Yellow, \$1,959 | J. **689350** Hinged Square Hoop Earrings, 16.7mm, 14K Yellow, \$1,975 | K. **86677** Natural Diamond Infinity-Style Heart Necklace, 1/10 ctw, 3mm, 14K Yellow, 16-18", 33, \$1,275 | L. **689329** Round Domed Stud Earrings, 15mm, 14K Yellow, \$735 | M. **88760** Natural Diamond Heart Necklace, 1/10 ct, 3mm, 14K Yellow, 18", 33, \$1,485



Feelings of Forever

From sophisticated line bracelets to classic lab-grown diamond jewelry styles, gift her eye-catching pieces designed to last.



Lab-Grown

A. **1874*** Lab-Grown Diamond Stud Earrings, 4 ctw, 8mm, 14K White, 618, \$5,645 | B. **28392*** Lab-Grown Diamond Solitaire Necklace, 2 ct, 8mm, 14K White, 18", 618, \$3,325 | C. **88766*** Lab-Grown Diamond Graduated Bar Necklace, 1/6 ctw, 2.75mm, 14K White, 18", 618, \$985 | D. **688989*** Lab-Grown Diamond Hoop Earrings, 1 ctw, 2mm, 14K White, 618, \$1,425 | E. **689354** Lab-Grown Diamond Hinged Hoop Earrings, 1/2 ctw, 2.9mm, 14K Yellow, 618, \$955 | F. **689328*** Lab-Grown Diamond Heart Dangle Earrings, 2 3/4 ctw, 4.5x5.3mm, 14K White, 618, \$4,245 | G. **BRC912*** Lab-Grown Diamond Line Bracelet, 1 5/8 ctw, 3mm, 14K White, 7", 618, \$2,009 | H. **BRC952*** Lab-Grown Diamond Line Bracelet, 5 ctw, 3x2.1mm, 14K White, 7", 618, \$8,089 | J. **BRC951*** Lab-Grown Diamond Line Bracelet, 3 ctw, 2.1mm, 14K White, 7", 618, \$4,485 | K. **BRC975*** Lab-Grown Diamond Line Bracelet 5 1/2 ctw, 4x3mm, 14K White, 7", 618, \$7,985 | L. **BRC1001*** Lab-Grown Diamond Flexible Bangle Bracelet, 5 ctw, 3.7mm, 14K White, 7", 618, \$7,435

*Indicates item is rhodium plated.

Vivid Visions



Add a vibrant touch with gemstone jewelry staples that reflect every feeling and style.



A. **BRC1000** Natural Amethyst Line Bracelet, 3.5x2.4mm, 14K Yellow, 7", 43, \$3,989 | B. **BRC1000** Natural Mozambique Garnet Line Bracelet, 3.5x2.4mm, 14K Yellow, 7", 57, \$3,765 | C. **BRC1000** Natural Pink Tourmaline Line Bracelet, 3.5x2.4mm, 14K Yellow, 7", 83, \$8,115 | D. **88765** Natural Amethyst Hoop Earrings, 5x3mm, 18.2x15.6mm, 14K Yellow, 43, \$1,449 | E. **88788** Natural Amethyst Necklace, 7x5mm, 14K Yellow, 18", 43, \$685 | F. **88788** Natural Pink Tourmaline Necklace, 7x5mm, 14K Yellow, 18", 83, \$1,085 | G. **88765** Natural Pink Tourmaline Hoop Earrings, 5x3mm, 18.2x15.6mm, 14K Yellow, 83, \$2,519 | H. **88788** Natural Mozambique Garnet Necklace, 7x5mm, 14K Yellow, 18", 57, \$665 | J. **88765** Natural Mozambique Garnet Hoop Earrings, 5x3mm, 18.2x15.6mm, 14K Yellow, 57, \$1,379



Treasured Tokens

Stylish fonts and playful designs add a modern touch to any engraving, creating meaningful reminders that keep cherished moments and loved ones close to the heart.

A. **86597** Natural Diamond Engravable Bar Necklace, .03 ct, 20x5mm, 14K Yellow, 16-18", 33, \$935 | B. **689245** Script Nameplate Necklace, 4.8x25mm, 14K Yellow, 16-18", \$1,275 | C. **689340** Retro Nameplate Necklace, 22.9x5mm, 14K Yellow, 16-18", \$1,065 | D. **88786** Engravable Pickleball Paddle Necklace, 22.7x14.8mm, 14K Yellow, 16-18", \$869 | E. **88769** Engravable Ribbon Necklace, 19x10.1mm, 14K Yellow, 16", \$645 | F. **689341** Block Letter Nameplate Necklace, 20.1x5mm, 14K Yellow, 16-18", \$1,745 | G. **BRC908** Engravable Heart Bracelet with Lobster Clasp, 11x11mm, 14K Yellow, 7", \$675 | H. **BRC979** Engravable Bar Bracelet with Spring Ring, 25x3.5mm, 14K Yellow, 7", \$485 | J. **BRC936** Engravable Bar Bracelet with Lobster Clasp, 23.6x5mm, 14K Yellow, 7", \$779 | K. **BRC973** Engravable Oval Bracelet with Lobster Clasp, 11x5mm, 14K Yellow, 7", \$529

Charmed by You

With versatile chain styles and endless options of meaningful motifs, giving one-of-a-kind gifts has never been easier.



A B C D E F G

H

R

U

P

S

V

Q

T

N

J

M

K

L

- A. **CH1280** Rolo Chain with Lobster Clasp, 1.65mm, 14K Yellow, 18", \$935 | B. **CH1283** Figaro Franco Chain with Lobster Clasp, 3.2mm, 14K Yellow, 18", \$2,505 | C. **CH1284** Diamond-Cut Paperclip-Style Forzentina Chain with Spring Ring, 85mm, 14K Yellow, 18", \$189 | D. **CH1248** Puffed Anchor Chain with Lobster Clasp, 3.8mm, 14K Yellow, 16", \$2,355 | E. **CH1281** Reversible Diamond-Cut Snake Chain with Lobster Clasp, 3.2mm, 14K Yellow/14K White Reversible, 18", \$3,219 | F. **CH1255** Flat Heart Chain with Lobster Clasp, 1.9mm, 14K Yellow, 18", \$649 | G. **CH1270** Barleycorn Chain with Lobster Clasp, 1.5mm, 14K Yellow, 18", \$1,675 | H. **88486** Natural Diamond-Accented Star Pendant, 17.16x10.63mm, .03 ctw, 1.2mm, 14K Yellow, 33, \$555 | J. **88629** Circle Charm Necklace, 12mm, 14K Yellow, 18", \$1,885 | K. **88105** Natural Mozambique Garnet Bezel-Set Pendant, 3mm, 11.05x3.78 mm, 14K Yellow, 57, \$165 | L. **88000** Tiny Puffy Heart Pendant, 14.31x8mm, 14K Yellow, \$219 | M. **88404** Natural Diamond Horseshoe Pendant, 1/8 ctw, 15.97x7.64mm, 14K Yellow, 33, \$705 | N. **88500** Natural Diamond and Natural White Cabochon Opal Pendant, .02 ctw, 7x5mm, 14K Yellow, 60, 33, \$729 | P. **88140** Natural Diamond Vertical Bar Pendant, 1/8 ctw, 1.7mm, 14K White, 33, \$755 | Q. **688833** Red Enamel Heart Pendant, 11.57x8.7mm, 14K Yellow, \$365 | R. **88627** Natural Diamond Faith Over Fear Pendant, .02 ctw, 1mm, 14K Yellow, 33, \$ 499 | S. **88329** Star of David Pendant, 19.6x10.4mm, 14K Yellow, \$415 | T. **88613** Engravable Sideways Heart Pendant, 19.2x10.6mm, 14K Yellow, \$505 | U. **689129** Natural Diamond Heart Pendant, 17.6x1.5mm, 1/4 ctw, 1.3mm, 14K Yellow, 33, \$1,099 | V. **688970** Lab-Grown Diamond Initial Pendant, 1/8 ctw, 1.5mm, 14K White, 618, \$469 Lab-Grown

Heartfelt Hues

Explore trending stone shapes, shades, and settings that will have her blushing.



A. **104813** Natural Round Mozambique Garnet, 7.5mm | B. **302109** Lab-Grown Oval Pink Sapphire, 8x6mm **New** **Lab-Grown** | C. **176197** Natural Round Rhodolite Garnet, 7mm | D. **Lab-Grown Elongated Cushion Rose-Cut Diamond with Report**, 2.07 ct **New** **Lab-Grown** | E. **67094** Lab-Grown Marquise Ruby, 12x6mm **New** **Lab-Grown** | F. **176198** Natural Round Rhodolite Garnet, 8mm | G. **Lab-Grown Pear Rose-Cut Diamond with Report**, 3.00 ct **New** **Lab-Grown** | H. **999575** Half-Drilled Pink Freshwater Cultured Pearl, 7mm **New** | J. **Notable Gems® Natural Purple Spinel**, 9.9x7.1mm | K. **302110** Lab-Grown Oval Pink Sapphire, 9x7mm **New** **Lab-Grown** | L. **120396** Half-Drilled White Freshwater Cultured Pearl, 10mm **New** | M. **104814** Natural Round Mozambique Garnet, 8mm

*Indicates item is rhodium plated.



N. **123624** Lab-Grown Diamond Eternity Band, 1/3 ctw (1.5mm), 14K Yellow, size 7, 618, \$1,449 **Lab-Grown**
3C Design | P. **122968*** Lab-Grown Diamond Anniversary Band, 1/3 ctw (3.5x1.75mm), 14K White, 618, \$1,235
3C Design | Q. **123798** Lab-Grown Diamond Anniversary Band, 1/3 ctw, 14K Yellow, 618, \$1,449
3C Design | R. **123631*** Lab-Grown Diamond Anniversary Band, 1/2 ctw (3mm), 14K White, 618, \$1,635 **3C Design**
3C Design | S. **124509*** Lab-Grown Diamond Anniversary Band, 1/3 ctw, 14K Yellow, 618, \$1,389 **3C Design**
3C Design | T. **126547*** Lab-Grown Diamond Eternity Band, 5/8 ctw (3x1.5mm), 14K White, size 7, 618, \$2,779 **3C Design**
3C Design | U. **126140** Lab-Grown Diamond Eternity Band, 1 1/5 ctw (3.25x2mm), 14K Yellow, size 7, 618, \$2,559
3C Design | V. **126821*** Lab-Grown Diamond Anniversary Band, 1 1/4 ctw (5x3mm), 14K White, 618, \$2,549 **3C Design** | W. **126546** Lab-Grown Diamond Anniversary Band, 2 1/2 ctw (5x3mm), 14K Yellow, 618, \$3,859 **3C Design**



A. **CH1235** Paperclip-Style Chain with Lobster Clasp, 1.25mm, 14K Yellow, 18", \$505
 B. **88801** Oval Pendant Mounting, 8x6mm, 14K Yellow, \$705 | C. **CH1111** Faceted Bead Cable Chain with Lobster Clasp, .85mm, 14K Yellow, 18", \$595 | D. **88743** Emerald Pendant Mounting, 7x5mm, 14K Yellow, \$495 | E. **CH164** Diamond-Cut Wheat Chain with Lobster Clasp, 1.05mm, 14K Yellow, \$799 | F. **88709** Lab-Grown Ruby and Natural Diamond Halo-Style Pendant, .07 ctw, 7x5mm, 14K Yellow, 6, 33, \$1,299 | G. **88808** Lab-Grown Ruby and Lab-Grown Diamond Double Halo-Style Earrings, 1/2 ctw, 6.5mm, 14K Yellow, 6, 618, \$2,395 | H. **88617** Lab-Grown Ruby and Natural Diamond Earrings, .06 ctw, 6x6mm, 14K Yellow, 6, 33, \$1,125 | J. **72454** Natural Mozambique Garnet 5-Stone Ring, 5x3mm, 14K Yellow, 57, \$1,145 | K. **72464** Oval Ring Mounting, 8x6mm, 14K Yellow, \$1,195 | L. **72462** Lab-Grown Ruby and Natural Diamond Ring, .08 ctw, 7x5mm, 14K Yellow, 33, \$1,819 | M. **72470** Emerald Ring Mounting, 7x5mm, 14K Yellow, \$1,185 | N. **72446** Natural Diamond Semi-Set 3-Stone Family Ring, 1/8 ctw, 3mm, 14K Yellow, 33, \$1,419 | P. **72442** Emerald 3-Stone Ring Mounting, 8x6mm, 14K Yellow, \$1,225

*Indicates item is rhodium plated.

Romantic Reverie



Rich gemstone shades paired with customizable 3C designs reflect every heart's desire — perfect for everyday elegance.



For Keeps



From elevated essentials to personalized styles, celebrate every expression of love with gifts that honor life's meaningful connections.

Forever After

Accented contour bands and reimagined solitaires pair seamlessly for a trend-forward bridal stack.



- A. **126889** Lab-Grown Diamond Contour Band, 1/5 ctw (3.5x2mm), 14K Yellow, 618, \$1,129
Lab-Grown | B. **126458*** Solitaire Engagement Ring Mounting, 2 ct (12x6mm), 14K Yellow/14K White, \$1,079  **3C Design**
- C. **126921** Lab-Grown Diamond Anniversary Band, 1/2 ctw (3x1.5mm), 14K Yellow, 618, \$2,219
Lab-Grown | D. **51802** Grooved Ladies' Band, 2mm, 14K Yellow, size 7, \$1,175 | E. **126666** Anniversary Band Mounting, 2 1/4 ctw (5x3mm), 14K Yellow, \$839  **3C Design**

*Indicates item is rhodium plated.

Perfect Pairings



Offer couples stylish reasons to celebrate their next chapter with trending settings and shanks and matching wedding bands.

A. **2002140** Emerald Basket Setting, 10x8mm, 14K Yellow, \$305 | B. **SH1057** Split-Shoulder Flat-End Open Shank, 8.2mm, 14K Yellow, \$919 | C. **2002139** Square Basket Setting, 8x8mm, 14K White, \$299 | D. **SH967*** Flat-End Open Shank, 8mm, 14K White, \$1,305 | E. **SH967*** Flat-End Open Shank, 4mm, 14K White, \$669 | F. **2002137** Round Basket Setting, 8mm, 14K Yellow, \$239 | G. **2002137** Round Basket Setting, 8mm, 14K White, \$235 | H. **Lab-Grown Diamond**, 8mm [Lab-Grown](#) | J. **F10** Flat Band, 7mm, 14K Yellow, size 10, \$1,535 Shown with outside love forever engraving | K. **F1R7** Comfort-Fit Lightweight Flat Band, 5mm, 14K Yellow, size 7, \$1,259 Shown with outside love forever engraving | L. **57908** Ladies' Floral Band, 2.7mm, 14K Yellow, size 7, \$1,495 | M. **57796** Men's Floral Band, 7mm, 14K Yellow, size 10, \$3,439 | N. **VF1R10** Comfort-Fit Centered-Groove Flat Band, 7mm, 14K Yellow, size 10, \$2,195 | P. **VF1R7** Comfort-Fit Centered-Groove Flat Band, 5mm, 14K Yellow, size 7, \$1,429 | Q. **126417** Natural Diamond Anniversary Band, 1/3 ctw, 1.7mm, 14K Yellow, size 7, 32, \$2,455 | R. **126298** Natural Diamond Wedding Band, 1/3 ctw, 6mm, 14K Yellow, size 10, 32, \$3,529





Everlasting Vow



Capture the past, present, and future of any love story with popular three-stone engagement rings for her or accented bands for him.

- A. **126898** Lab-Grown Diamond Semi-Set Engagement Ring, 1 1/4 ct (7mm), 1/5 ctw, 14K Yellow, 618, \$2,375 | B. **126824*** Lab-Grown Diamond Semi-Set Engagement Ring 1 3/4 ct (8x6mm), 3/8 ctw, 14K White, 618, \$1,479 | C. **126952** Lab-Grown Diamond Semi-Set Engagement Ring, 1 ct (10x5mm), 1/3 ctw, 14K Yellow, 618, \$1,495 | D. **126863** Lab-Grown Diamond Men's Ring, 1 ct (7x5mm), 14K Yellow, 618, \$3,399 | E. **126905*** Natural Diamond Men's Ring, 1/6 ct (3.75x2.5mm), 1/4 ctw, 14K White, 26, 32, \$3,385 | F. **126749** Lab-Grown Diamond Wedding Band, 1/4 ct (3.5x3.5mm), 14K Yellow, size 10, 618, \$2,445 | G. **126800** Natural Diamond Wedding Band, 1/5 ctw, 14K Yellow, size 10, 32, \$1,845 | H. **126832** Lab-Grown Diamond Wedding Band, 1/6 ct (3.5mm), 1/3 ctw, 14K Yellow, size 10, 618, \$3,239

*Indicates item is rhodium plated.

Love On Display

Elegant packaging and lacquered roses trimmed in gold add a touch of sophistication to any Valentine's Day gift.




A. **61-0007** Eva Collection Burgundy Velvet Pouch, \$4.80 | B. **61-10060** Tully Collection Mauve Travel Case, \$8.75
C. **61-6084** Marina Collection Beige Linen Double Ring Box, \$8.75 | D. **61-9087** Laquered Pearl-Colored Rose with Gold Trim, \$99 | E. **61-9060** Laquered Pink Pearl Rose with Gold Trim, \$99 | F. **61-9047** Laquered Burgundy Rose with Gold Trim, \$99 | G. **61-10052** Kayte Collection Pink Velvet Single Ring Box, \$5.50 | H. **61-10031** Darcy Collection Mulberry Velvet Single Ring Box, \$7.25 | J. **61-10037** Eloise Collection Ivory Velvet Single Ring Box, \$7.75. Items featured left to right: **72464**, see page 25; **688989**, see page 14; **CH164**, see page 24; **123213**, see page 10; **126824**, see page 32

Back cover, top to bottom:

CH617 Diamond-Cut Singapore Chain with Spring Ring, 1.2mm, 14K Yellow, 18", \$405 | **57932** Round Locket Pendant, 25.6x18mm, 14K Yellow, \$1,175 | **88317** Petite XO Stud Earrings, 8.2x3.6mm, 14K Yellow, \$265 | **88158** Asymmetrical Heart Earrings, 6mm, 14K Yellow, \$249 | **88758** Natural Diamond Interlocking Heart Earrings, 1/5 ctw, 14K Yellow, 33, \$2,425

Front cover, top to bottom, left to right:

88593 Engravable Round Toggle Necklace, 15x12mm, 14K Yellow, 18", \$1,469 | **689254** Hoop Earrings, 20mm, 14K Yellow, \$1,365 | **126532** Natural Diamond Stackable Ring, 1/8 ctw, 2mm, 14K Yellow, 32, \$999 | **126546** Lab-Grown Diamond Anniversary Band, 2 1/2 ctw (5x3mm), 14K Yellow, 618, \$3,859  **3C Design** | **61-10031** Darcy Collection Mulberry Velvet Single Ring Box, \$7.25 | **689352** Natural Diamond Heart Ring, 1/3 ctw, 20.65x20.35mm, 14K Yellow, 33, \$1,669 | **CH1247** Curb and Paperclip-Style 50/50 Chain with Lobster Clasp, 2.7mm, 14K Yellow, 18", \$1,475

Stone codes:

6 Lab-Grown Ruby, SYN | **26** Natural Diamond, SI2-SI3, G-I, N | **32** Natural Diamond, SI2-SI3, G-H, N | **33** Natural Diamond, I1, G-H, N | **39** White Freshwater Cultured Pearl, A, B | **43** Natural Amethyst, AA, H | **57** Natural Mozambique Garnet, AA, N | **60** Natural White Cabochon Opal, AAA, N | **83** Natural Pink Tourmaline, AA, H | **124** Natural Diamond, I1, G-I, N | **618** Lab-Grown Diamond, SI1, G-H, SYN | **638** Natural Diamond, I1, H+, N | **650** White Freshwater Cultured Pearl, AA, B

*Indicates item is rhodium plated.

All jewelry is priced at suggested retail based on \$2,600 gold and \$26 silver. Packaging is priced at jeweler's cost, and is sold each, unless otherwise noted. Diamond weights are not exact. See chart at Stuller.com/DiamondSizeRanges for weight ranges. Prices are subject to change without notice. Visit Stuller.com for complete product selections, current pricing, and availability.

